

MCI 102 SERIES PARTS MANUAL

Date 1-1-94

Page 12.0103

Key	Part Number	Description	Note	Qty	
				2 Axle	3 Axle
SUSPENSION ASSEMBLY - FRONT (3-AXLE)					
1	12K-1-18	Suspension Support Assy - RH Front	k	-	1
3	12K-1-17	Suspension Support Assy - LH Front	k	-	1
	12K-1-27	Suspension Support Assy - RH Front (102B3/C3)	l	-	1
	12K-1-25	Suspension Support Assy - LH Front (102B3/C3)	l	-	1
4	12J-1-68	Pin - Mtg Shock LH/RH	i	-	2
	12J-5-8	Pin - Mtg Shock LH/RH	j	-	2
5	12J-1-69	Bracket Assy (Upper Radius Rod) RH	k	-	1
	12K-1-28	Bracket Assy (Upper Radius Rod) RH	l	-	1
	12J-1-85	Pin & Tube S/A - Transverse Radius Rod Mount		-	1
	12J-1-87	Pin & Tube S/A - Upper Radius Rod Mount		-	1
6	12J-1-53	Bracket Assy (Upper Radius Rod) LH	k	-	1
	12K-1-26	Bracket Assy (Upper Radius Rod) LH	l	-	1
	12J-1-86	Pin & Tube S/A - Upper Radius Rod Mount		-	1
7	12J-1-43	Saddle - Mtg LH/RH Support Inner	c	-	2
8	12J-1-42	U-Bolt - Mtg LH/RH Support Inner (5/8-18 x 8-1/2)	c	-	2
9	12J-1-14	Base - Mtg LH/RH Support Inner	d	-	2
10	12J-1-64	Bracket Assy - RH Lower Radius Rod	k	-	2
11	12J-1-65	Bracket Assy - LH Lower Radius Rod	k	-	2
	12J-1-66	Plate - Mtg Radius Rod		-	1
	12J-1-14	Base		-	1
	12K-1-29	Bracket Assy - LH/RH Lower Radius Rod	l	-	4
12	19-1-1048	Capscrew (5/8-18 x 8) - Mtg Base to Supports LH/RH		-	12
13	11J-1-4	Flatwasher - (5/8) Hdn		-	24
14	11J-1-5	Nut, Hex (5/8-18) - Stover		-	12
15	12J-1-81	Radius Rod Assy - Upper/Lower LH/RH	e	-	4
	12J-1-26	Bushing - Radius Rod	e	-	2
15	12J-1-134	Radius Rod Assy - Upper/Lower LH/RH (102B3/C3)	f	-	4
	12J-1-133	Bushing - Radius Rod	f	-	2
16	12J-1-29	Retainer - Radius Rod Bushings Lower		-	4
17	12J-1-30	Capscrew, Hex		-	2
18	12J-1-31	Flatwasher - Hdn		-	4
19	12J-1-32	Nut, Hex - Stover		-	2
20	12-1-208	Washer - Radius Rod		-	8
21	12-1-207	Stud - Radius Rod		-	16
22	19-3-109	Nut, Hex - Parkerized (3/4-16)		-	16
23	12-1-211	Lockstrap		-	8
24	12K-1-2	Radius Rod - Transverse	e	-	1
24	12K-1-50	Radius Rod - Transverse (102B3/C3)	f	-	1
25	12J-1-133	Bushing - Rod to Frame (Soft)	f	-	1
26	12J-1-35	Bushing - Rod to Axle (Hard)	f	-	1
27	12J-1-88	Air Spring LH/RH	a	-	2
	12G-1-60	Air Spring LH/RH	b,g	-	2
	12K-1-45	Air Spring LH/RH (102B3/C3)	h	-	2
28	19-3-188	Locknut, Hex (1/2-13)		-	6
29	19-2-10	Flatwasher (1/2)		-	6
30	19-2-12	Flatwasher (3/4)		-	6
31	7C-3-12	Locknut, Hex (3/4-16)	a	-	2
31	19-3-152	Locknut, Hex (3/4-16)	b	-	2
31	19-3-220	Locknut, Hex (3/4-16 UNF GR5) (102B3/C3)		-	2
32	12L-5-3	Shock Absorber Assy - Front Suspension	m	-	2
	12B-5-1	Shock Absorber - Only		-	1
32A	12L-5-2	Bushing - Shock		-	4
	12L-5-70	Shock Absorber Assy - Front LH/RH (102B3/C3)	n	-	2
	12L-5-69	Shock Absorber - Only		-	1
	12L-5-2	Bushing - Shock		-	4
33	12J-1-68	Pin - Mtg Shock to Front Bogie Assy	i	-	4
33	12J-5-8	Pin - Mtg Shock to Front Bogie Assy	j	-	4
34	12J-3-106	Washer - Shock		-	6
36	12J-3-105	Washer (Hdn) Shock		-	4
37	19-3-7	Locknut, Hex (3/4-16)		-	4
38	12K-1-16	Bracket - Mtg Front Leveling Valve Link		-	1
39	12K-1-14	U-Bolt - Mtg Link Bracket/Axle		-	1
39	12K-1-52	U-Bolt - Mtg Link Bracket/Axle (102B3/C3)		-	1
40	19-3-5	Locknut (3/8-24) - Mtg Link Bracket/Axle		-	2
41	19-2-9	Flatwasher (3/8)		-	2

MCI 102 SERIES PARTS MANUAL

Date 1-1-94

Page 12.0104

Key	Part Number	Description	Note	Qty	
				2 Axle	3 Axle
		SUSPENSION ASSEMBLY - FRONT (2 & 3 AXLE COACHES)			
	19-3-16	Nut		-	2
	19-2-27	Lockwasher (3/8)		-	2
	19-7-55	Pin (1/8 x 1-1/2) Cotter		-	1
		<p>NOTES: a. Used prior to TMC Unit #6485 and MCI Unit #41854 (102A3) & Unit #41502 (102C3).</p> <p>b. Effective with TMC Unit #6485 and MCI Unit #41854 (102A3) & Unit #41502 (102C3).</p> <p>c. Used prior to TMC Unit #5534 and MCI Unit #41785.</p> <p>d. Effective with TMC Unit #5534 and MCI Unit #41785.</p> <p>e. Used prior to TMC Unit #7173 and MCI Unit #42659.</p> <p>f. Effective with TMC Unit #7173 and MCI Unit #42659.</p> <p>g. Used prior to MCI Unit #42767 and TMC May 1989 production.</p> <p>h. Effective with MCI Unit #42767 and TMC May 1989 production.</p> <p>i. Used prior to TMC Unit #7157.</p> <p>j. Effective with TMC Unit #7157.</p> <p>k. Used prior to TMC Unit #7174 and MCI Unit #42945.</p> <p>l. Effective with TMC Unit #7174 and MCI Unit #42945.</p> <p>m. Used prior to TMC and MCI 1992 production.</p> <p>n. Effective with TMC and MCI 1992 production.</p>			

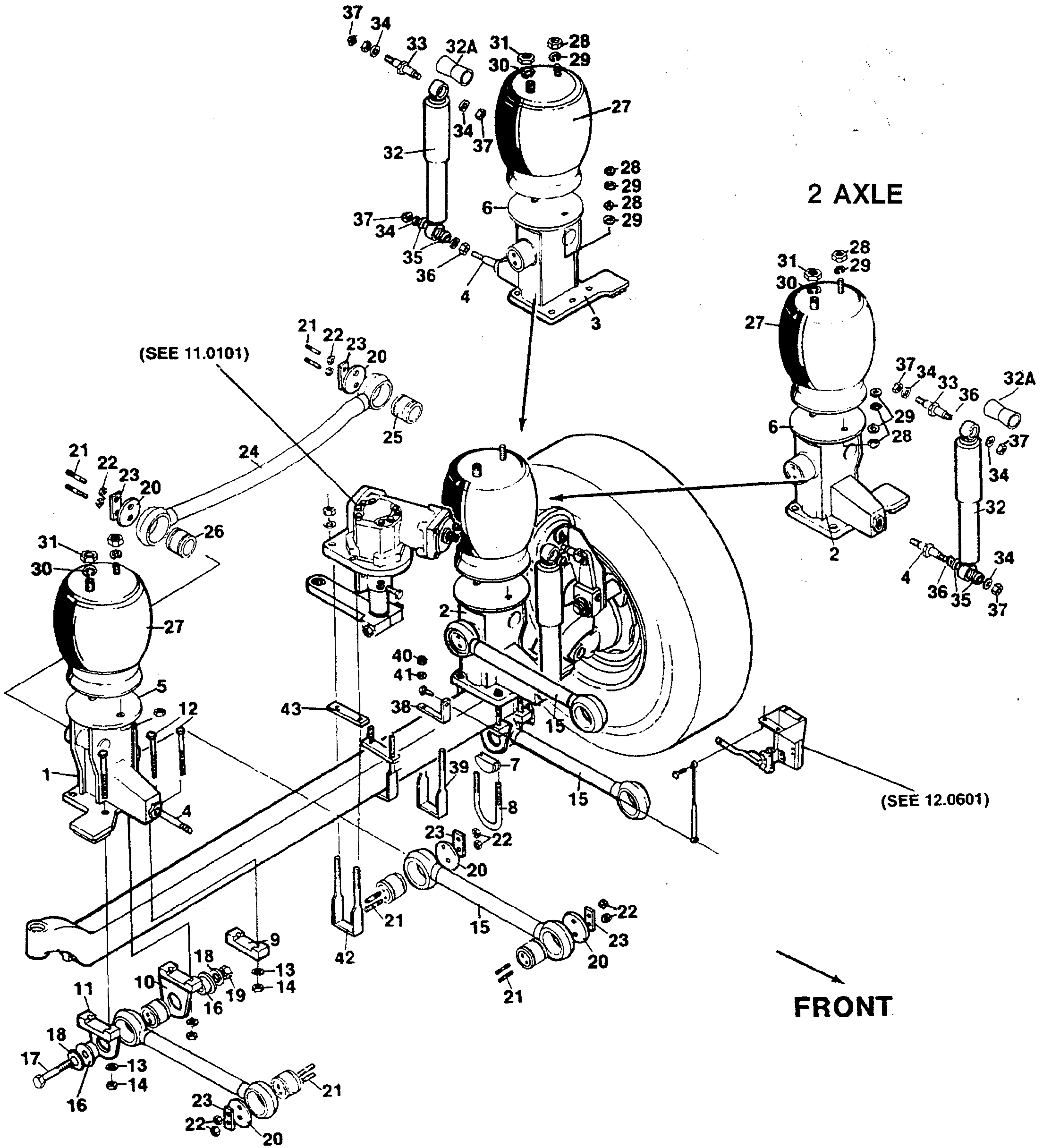
MCI 102 SERIES PARTS MANUAL

Date 10-1-92

Page 12.0101

3 AXLE

2 AXLE



SUSPENSION - FRONT

MCI 102 SERIES PARTS MANUAL

Date 10-1-92

Page 12.0102

Key	Part Number	Description	Note	Qty	
				2 Axle	3 Axle
SUSPENSION ASSEMBLY - FRONT (2-AXLE)					
1	12K-1-18	Suspension Support Assy - RH Front		1	-
2	12K-1-4	Suspension Support Assy - LH Front		1	-
4	12J-1-68	Pin - Mount Shock LH/RH	i	2	-
	12J-5-8	Pin - Mount Shock LH/RH	j	2	-
5	12J-1-69	Bracket Assy - Upper Radius Rod RH		1	-
	12J-1-85	Pin & Tube S/A - Transverse Radius Rod Mount		1	-
	12J-1-87	Pin & Tube S/A - Upper Radius Rod Mount		1	-
6	12J-1-53	Bracket Assy - Upper Radius Rod LH		1	-
	12J-1-86	Pin & Tube S/A - Upper Radius Rod Mount		1	-
7	12J-1-43	Saddle - Mount LH/RH Support Inner	c	2	-
8	12J-1-42	U-Bolt - Mount LH/RH Support Inner (5/8-18 x 8-1/2)	c	2	-
9	12J-1-14	Base - Mount LH/RH Support Inner	d	2	-
10	12J-1-64	Bracket Assy - RH Lower Radius Rod & Outer Support		2	-
11	12J-1-65	Bracket Assy - LH Lower Radius Rod & Outer Support		2	-
	12J-1-66	Plate - Mount Radius Rod		1	-
	12J-1-14	Base		1	-
12	19-1-1048	Capscrew - Mount Base to Support LH/RH (5/8-18 x 8)		12	-
13	11J-1-4	Flatwasher - (5/8) Hdn		24	-
14	11J-1-5	Stover Nut - (5/8-18) Hex Head		12	-
15	12J-1-81	Radius Rod Assy - Upper/Lower LH/RH	e	4	-
	12J-1-26	Bushing - Radius Rod	e	2	-
	12J-1-134	Radius Rod Assy - Upper/Lower LH/RH	f	4	-
	12J-1-133	Bushing - Radius Rod	f	2	-
16	12J-1-29	Retainer - Radius Rod Bushings Lower		4	-
17	12J-1-30	Capscrew - Hex Head		2	-
18	12J-1-31	Flatwasher - Hdn		4	-
19	12J-1-32	Stover Nut - Hex Head		2	-
20	12-1-208	Washer - Radius Rod		8	-
21	12-1-207	Stud - Radius Rod		16	-
22	19-3-109	Nut (3/4-16) Hex - Parkerized		16	-
23	12-1-211	Lockstrap		8	-
24	12K-1-2	Radius Rod - Transverse	e	1	-
	12K-1-50	Radius Rod - Transverse	f	1	-
25	12J-1-133	Bushing - Rod to Frame (Soft)	f	1	-
26	12J-1-35	Bushing - Rod to Axle (Hard)	f	1	-
27	12J-1-88	Air Spring LH/RH	a	2	-
	12G-1-60	Air Spring LH/RH	b,g	2	-
	12K-1-45	Air Spring LH/RH	h	2	-
28	19-3-188	Hex Locknut - (1/2-13)		6	-
29	19-2-10	Flatwasher (1/2)		6	-
30	19-2-12	Flatwasher (3/4)		6	-
31	7C-3-12	Hex Locknut (3/4-16)	a	2	-
	19-3-152	Hex Locknut (3/4-16)	b	2	-
32	12L-5-70	Shock Absorber Assy - Front Suspension		2	-
	12L-5-69	Shock Absorber - Only		1	-
32A	12L-5-2	Bushing - Shock		4	-
33	12J-1-68	Pin - Mount Shock to Front Bogie Assy	i	4	-
33	12J-5-8	Pin - Mount Shock to Front Bogie Assy	j	4	-
34	12J-3-106	Washer - Shock		6	-
36	12J-3-105	Washer (Hdn) Shock		4	-
37	19-3-7	Locknut (3/4-16) Hex		4	-
38	12K-1-16	Bracket - Mount Front Leveling Valve Link		1	-
39	12K-1-14	U-Bolt - Mount Link Bracket/Axle		1	-
40	19-3-5	Locknut (3/8-24) Mount Link Bracket/Axle		2	-
41	19-2-9	Flatwasher (3/8)		2	-
42	11J-1-3	U-Bolt (5/8-18 x 7-3/4)		2	-
43	11J-1-2	Spacer (5/8 x 1-3/4 x 5-3/4) Mount Under Strg Gearbox		2	-
	19-1-282	Capscrew (1/2-13 x 1-1/2) Hex Head		3	-
	19-3-345	Nut (3/8-24) Mount Strg Shaft Assy		2	-
	19-1-309	Capscrew (5/8-18 x 1-3/4) Hex Head		2	-
	12J-1-83	U-Bolt (5/8-18 x 7-1/4)		2	-